

Pollinator Identification Guide

Honeybee

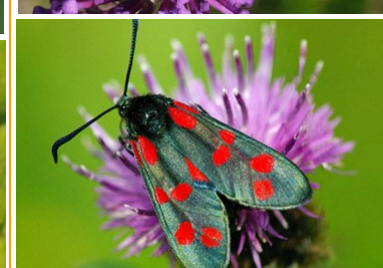
Bumblebee

Other bee

Hoverfly

Butterfly/Moth

Other insect



- 2 sets of wings
- Long antennae
- Pollen baskets on their hind legs
- Orange banded (occasionally all black)
- Smaller and thinner than most bumblebees



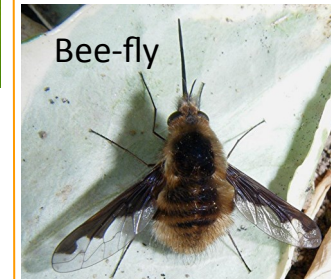
- Fat and furry!
- 2 sets of wings
- Long antennae
- Shiny back legs which pollen balls can stick to.
- Tails usually white, red, buff or brown



As well as honey and bumble bees there are many solitary bees including mining, cavity nesting, mason, flower, leaf cutter, and cuckoo bees. If it has long antennae, 6 legs, and 2 pairs of wings but is not a honey or bumblebee then it is likely one of these.

- 1 set of wings
- Short antennae (shorter than bees and wasps)
- Large eyes
- Often hover close to flowers
- Many hoverflies look like bees and wasps (mimics) to help protect them from predators.

- 2 wings on each side
- Long antennae
- Butterflies have clubs on the end of their antennae and rest with their wings vertically above their body
- Moths have pointed or feathery antennae and rest with their wings folded over their body



These include wasps, beetles, bee-flies (a bumblebee mimic), and other flies such as the green bottle. Flies have large eyes.